 **CABOMETYX**<sup>®</sup>  
(cabozantinib) tablets  
60 mg | 40 mg | 20 mg

## Getting started on CABOMETYX **IN NEUROENDOCRINE TUMORS (NETs)**

Patient portrayal

### What is CABOMETYX?

CABOMETYX is a prescription medicine used to treat:

- Adults and children 12 years of age and older who have a type of cancer called pancreatic neuroendocrine tumors (pNET) or extra-pancreatic neuroendocrine tumors (epNET) that has been previously treated, cannot be treated by surgery, and has spread (locally advanced or metastatic).

It is not known if CABOMETYX is safe and effective in children younger than 12 years of age.

### **SELECT IMPORTANT SAFETY INFORMATION**

#### What are the possible side effects of CABOMETYX?

**CABOMETYX may cause serious side effects, including bleeding (hemorrhage).**

CABOMETYX can cause severe bleeding that may lead to death. Tell your healthcare provider right away if you get any signs of bleeding during treatment with CABOMETYX, including: coughing up blood or blood clots; vomiting blood or if your vomit looks like coffee grounds; red or black (looks like tar) stools; menstrual bleeding that is heavier than normal; and any unusual or heavy bleeding.

Please see Important Safety Information on pages 16-19 and [tap here](#) for the Patient Information in the full Prescribing Information.

# Learn more about your prescribed treatment

Welcome! Here you can learn more about CABOMETRYX, a medicine for people ages 12 and older who have been previously treated for neuroendocrine tumors (NETs) inside the pancreas (pNET) and outside the pancreas (epNET).

## Remember



Always talk to your healthcare team if you have any questions or concerns.



[Tap here](#) to visit CABOMETRYX.com for more information and helpful resources.



The information in this handbook is not a substitute for advice from your healthcare team.

## SELECT IMPORTANT SAFETY INFORMATION

**A tear in your stomach or intestinal wall (perforation) or an abnormal connection between 2 parts of your body (fistula).** Tell your healthcare provider right away if you get tenderness or pain in your stomach area (abdomen) that is severe or that does not go away.

**Blood clots, stroke, heart attack, and chest pain.** Get emergency help right away for:

- swelling or pain in your arms or legs
- shortness of breath
- feel lightheaded or faint
- sweating more than usual
- numbness or weakness of your face, arm, or leg, especially on one side of your body
- sudden confusion, trouble speaking or understanding
- sudden trouble seeing in one or both eyes
- sudden trouble walking
- dizziness, loss of balance or coordination
- a sudden severe headache

Please see Important Safety Information on pages 16-19 and [tap here](#) for the Patient Information in the full Prescribing Information.

How CABOMETRYX may work p. **4**

Looking at the CABOMETRYX clinical study p. **6**

Results for NETs that started **INSIDE** the pancreas p. **8**

Results for NETs that started **OUTSIDE** the pancreas p. **10**

Taking your CABOMETRYX p. **12**

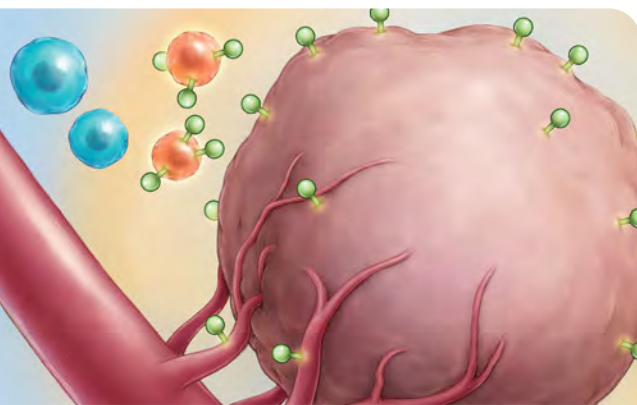
Important Safety Information p. **16**

Working with your healthcare team to help manage certain side effects p. **20**

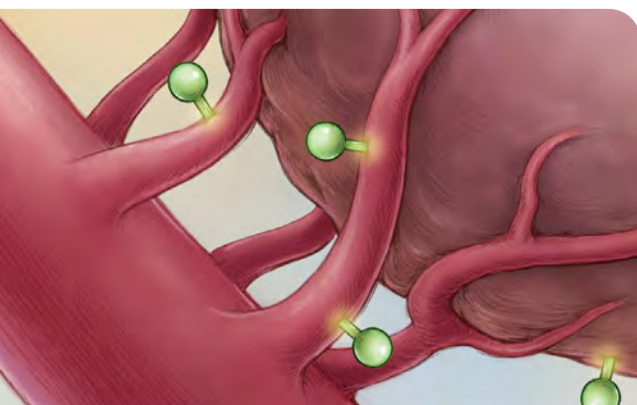
Accessing financial support information and resources  p. **22**

 **TAP HERE** for free educational resources for your treatment journey  p. **24**

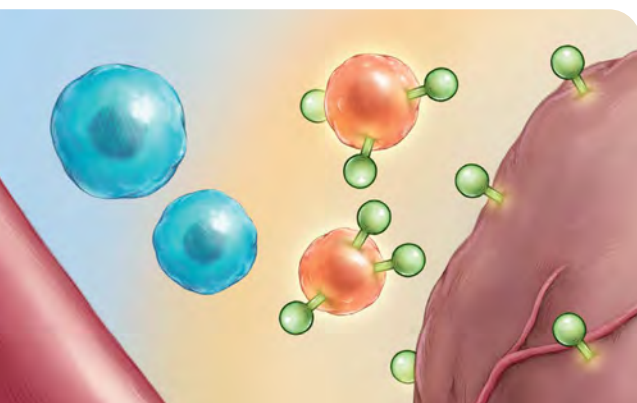
## What happens in cancer



Your body's cells include proteins that send signals telling cells to grow and divide.



In cancer, these signals cause blood vessels to grow and feed the tumor (angiogenesis).

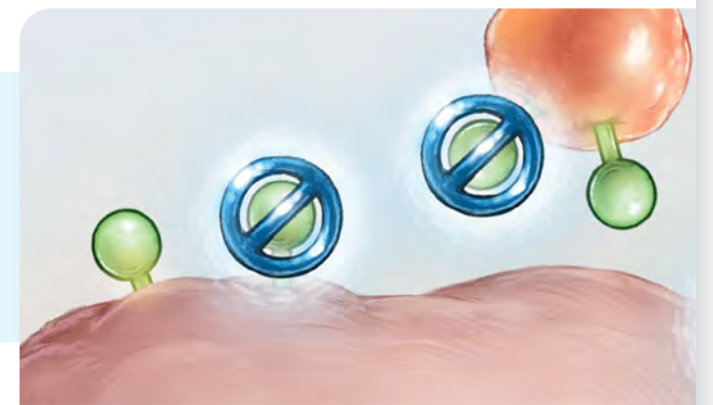


The immune cells that usually help find and kill cancer cells are stopped by immunosuppressive cells.

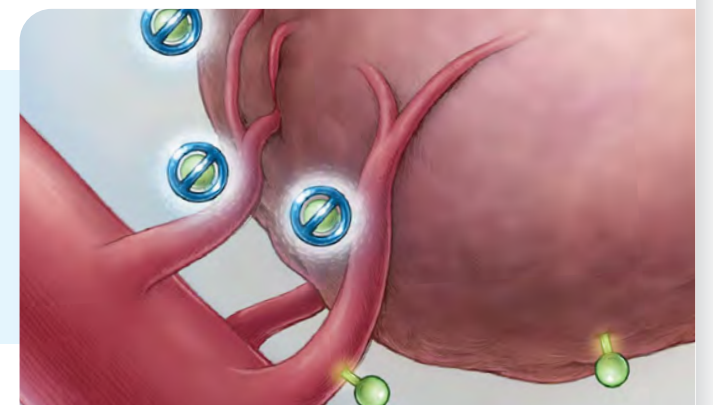
Treatment with CABOMETRYX may impact both cancer and normal cells—which may result in certain side effects. For information about CABOMETRYX side effects, please see Important Safety Information throughout this brochure, on pages 16-19, and [tap here](#) for the Patient Information in the full Prescribing Information.

## How CABOMETRYX (cabozantinib) may work

CABOMETRYX is believed to reduce or slow the proteins' signals that tell cancer cells to grow and divide.



CABOMETRYX may limit the growth of blood vessels that feed the tumor. It also may help the body kill cancer cells.



With CABOMETRYX, tumors may stop growing.



### Key



protein



immunosuppressive cells



immune cells



CABOMETRYX

**CABOMETRYX**<sup>®</sup>  
(cabozantinib) tablets  
60 mg | 40 mg | 20 mg

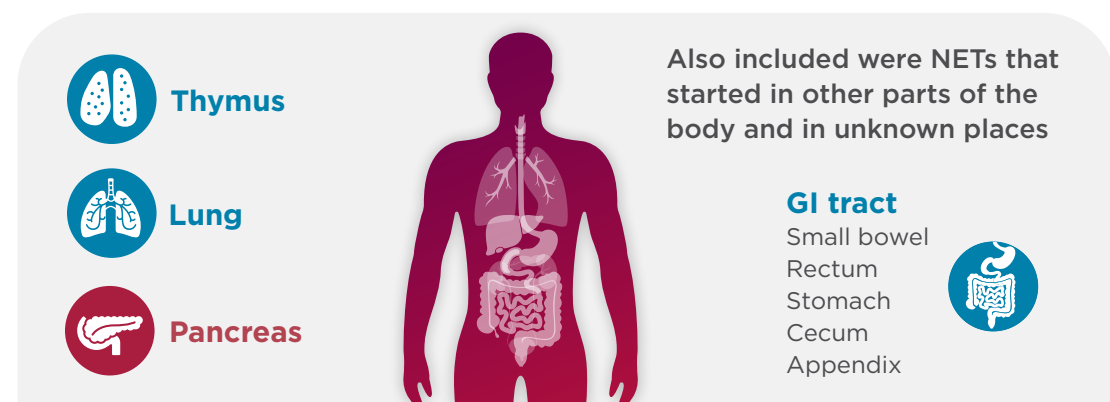
## Looking at the CABOMETYX (cabozantinib) clinical study

If you have neuroendocrine tumors (NETs) and they are growing or spreading despite treatment, CABOMETYX could help.

In the clinical study, CABOMETYX was tested and evaluated in people after 1 or more NET treatments stopped working.

The CABOMETYX clinical study enrolled people with NETs that started inside or outside the pancreas. Their NETs had spread and progressed after 1 or more prior treatments (not including a somatostatin analog [SSA]). This clinical study was **sponsored by the National Cancer Institute\*** to meet the need for additional effective treatments for people with NETs whose condition is advancing.

A broad spectrum of people were evaluated in the clinical study. They had functional or nonfunctional NETs, all different grades, that had started in different locations:



### SELECT IMPORTANT SAFETY INFORMATION

**High blood pressure (hypertension).** Hypertension is common with CABOMETYX and sometimes can be severe. Your healthcare provider will check your blood pressure before starting CABOMETYX and regularly during treatment with CABOMETYX. If needed, your healthcare provider may prescribe medicine to treat your high blood pressure. Tell your healthcare provider if you develop severe headaches, nose bleeds, tiredness or confusion, vision changes, chest pain, trouble breathing, irregular heartbeat, or blood in your urine.

Please see Important Safety Information on pages 16-19 and [tap here](#) for the Patient Information in the full Prescribing Information.

Some people in the study were taking an SSA, and all had previously received 1 or more treatments, which may have included a:



Peptide receptor radionuclide therapy (PRRT)



Targeted therapy



Chemotherapy

A total of 298 people participated in the clinical study and were split into 2 groups:



99 people with NETs that started **inside the pancreas**



199 people with NETs that started anywhere **outside the pancreas**

Within these groups, people were randomly assigned to receive CABOMETYX or placebo (sugar pill). The clinical study was blinded, which means that participants did not know what they received until after it ended. This was done to prevent bias when reporting results.

**The clinical study demonstrated a dramatic improvement in many of the people in the CABOMETYX group, so it was stopped early. The study then offered CABOMETYX to eligible people taking placebo.**

People stayed on treatment until their tumor started to grow again, or they had a side effect that could not be managed.

This was the **first Phase 3 study that included people who had prior PRRT for NETs** that started inside or outside the pancreas.

\*The National Cancer Institute (NCI) is a part of the National Institutes of Health and is the federal government's principal agency for cancer research and training. The clinical study was initiated in 2018 by NCI-funded National Clinical Trials Network group, the Alliance for Clinical Trials in Oncology (Alliance).

**CABOMETYX<sup>®</sup>**  
(cabozantinib) tablets  
60 mg | 40 mg | 20 mg

## For NETs That Started **INSIDE** the Pancreas

### Proven results of CABOMETYX in the clinical study

On average, CABOMETYX helped people live longer without NETs growing or spreading

People were able to  
**LIVE WITHOUT TUMOR GROWTH**  
**4x**  
**LONGER**

Median\* of **13.8** months for CABOMETYX vs **3.3** months for placebo

CABOMETYX reduced the risk of tumor growth or death by **78%** vs placebo

Individual results may vary.

\*Median is the middle value in a set of measurements—for some it was shorter; for others, longer.

†Tumors shrunk (partial response), but did not disappear.

‡Stabilized (stable disease) means that changes in tumor sizes were too small to be reported as growing or shrinking. This may be due to how tumors behave naturally rather than any effect of the medicine.

### SELECT IMPORTANT SAFETY INFORMATION

**Heart Problems.** CABOMETYX can cause heart failure that may lead to death. Your healthcare provider may check your heart function before and during treatment with CABOMETYX. Tell your healthcare provider right away if you get any of the following signs and symptoms: feeling like your heart is pounding, racing, or beating irregularly; shortness of breath; swelling of your ankles or feet; feeling lightheaded; feeling tired.

Please see Important Safety Information on pages 16-19 and [tap here](#) for the Patient Information in the full Prescribing Information.

NETs in some people taking CABOMETYX shrunk,<sup>†</sup> but not NETs in people taking placebo

**18%** for CABOMETYX **VS** **0%** for placebo

Individual results may vary.

**80%** (53 out of 66) of people taking CABOMETYX had tumors that stabilized<sup>‡</sup> or shrunk in size

**62%** stabilized and **18%** shrunk in people taking CABOMETYX

**55%** stabilized and **0%** shrunk in people taking placebo

Please consider that these results are not definitive and individual results may vary.

The clinical study also measured how long people who received CABOMETYX or placebo lived, known as overall survival. This is still being determined because there was not enough information to draw a definitive conclusion about overall survival.

The results of overall survival may be impacted by the trial ending early to allow eligible people from the placebo group to receive CABOMETYX. This makes it harder to measure the effect treatment had on how long people lived, since people did not receive CABOMETYX for the same length of time.

CABOMETYX may not work for everyone; individual results may vary.

**CABOMETYX**<sup>®</sup>  
(cabozantinib) tablets  
60 mg | 40 mg | 20 mg

## For NETs That Started OUTSIDE the Pancreas

### Proven results of CABOMETYX in the clinical study

On average, CABOMETYX helped people live longer without NETs growing or spreading

People were able to  
**LIVE WITHOUT  
TUMOR GROWTH**  
**2x**  
**LONGER**

Median\* of **8.5** months for CABOMETYX  
vs **4.2** months for placebo

CABOMETYX reduced the risk of tumor growth  
or death by **60%** vs placebo

Individual results may vary.

\*Median is the middle value in a set of measurements—for some it was shorter; for others, longer.

†Tumors shrunk (partial response), but did not disappear.

‡Stabilized (stable disease) means that changes in tumor sizes were too small to be reported as growing or shrinking. This may be due to how tumors behave naturally rather than any effect of the medicine.

### SELECT IMPORTANT SAFETY INFORMATION

**Diarrhea.** Diarrhea is common with CABOMETYX and can be severe. If needed, your healthcare provider may prescribe medicine to treat your diarrhea. Tell your healthcare provider right away if you have frequent loose, watery bowel movements.

**A skin problem called hand-foot skin reaction.** Hand-foot skin reactions are common with CABOMETYX and can be severe. Tell your healthcare provider right away if you have rashes, redness, pain, swelling, or blisters on the palms of your hands or soles of your feet.

Please see Important Safety Information on pages 16-19 and [tap here](#) for the Patient Information in the full Prescribing Information.

NETs in some people taking CABOMETYX shrunk,<sup>†</sup>  
but not NETs in people taking placebo

**5%**  
for CABOMETYX

VS

**0%**  
for placebo

Individual results may vary.

**69%** (92 out of 132) of people taking  
CABOMETYX had tumors that  
stabilized<sup>‡</sup> or shrunk in size

**64%** stabilized and **5%** shrunk  
in people taking CABOMETYX

**52%** stabilized and **0%** shrunk  
in people taking placebo

Please consider that these results are not definitive and individual  
results may vary.

**The clinical study also measured how long people who received CABOMETYX or placebo lived, known as overall survival. This is still being determined because there was not enough information to draw a definitive conclusion about overall survival.**

The results of overall survival may be impacted by the trial ending early to allow eligible people from the placebo group to receive CABOMETYX. This makes it harder to measure the effect treatment had on how long people lived, since people did not receive CABOMETYX for the same length of time.

CABOMETYX may not work for everyone;  
individual results may vary.

**CABOMETYX**<sup>®</sup>  
(cabozantinib) tablets  
60 mg | 40 mg | 20 mg

## CABOMETYX (cabozantinib) dosing

CABOMETYX is a **non-chemotherapy tablet** you can take at home **once-daily**, or as directed.

Take CABOMETYX as prescribed by your doctor. Do not stop taking any medicine without direction from your doctor.

### The recommended starting dosage



#### CABOMETYX once daily

**60 mg** for adults and children 12 years of age and older who weigh 88 pounds or more

**40 mg** for children 12 years of age and older who weigh less than 88 pounds

It is not known if CABOMETYX is safe and effective in children younger than 12 years of age.

### Your doctor or nurse will determine the dose that is right for you

Dose adjustments are common and happened in the **clinical study that showed the effectiveness and safety of CABOMETYX.**

### SELECT IMPORTANT SAFETY INFORMATION

**Protein in your urine and possible kidney problems.** Symptoms may include swelling in your hands, arms, legs, or feet. Your healthcare provider will check you for this problem during treatment with CABOMETYX.

Please see Important Safety Information on pages 16-19 and [tap here](#) for the Patient Information in the full Prescribing Information.

## Each person who takes CABOMETYX may respond differently

Not everyone will stay on the same dose of CABOMETYX. Finding the right dose for you may help keep you on treatment.

### Your healthcare team will partner with you to find a balance between efficacy and managing side effects



Your dose may be adjusted based on how your body responds to the medicine



Dose adjustments are not setbacks, since they may help you stay on treatment



Dose reductions are a way to customize treatment according to your needs

Watch actual healthcare professionals explain why dose adjustments are common during treatment



 **TAP HERE**

Talk to your healthcare team to learn ways to help manage certain side effects, either through lifestyle changes or with medicines they recommend.

Please note that not all side effects can be managed, and some may lead to permanent discontinuation of the medicine.

 **CABOMETYX**<sup>®</sup>  
(cabozantinib) tablets  
60 mg | 40 mg | 20 mg

# How to take CABOMETYX (cabozantinib)

## DO



- Swallow your CABOMETYX tablets whole
- Take your CABOMETYX dose at the same time everyday, or as prescribed
- Take CABOMETYX on an empty stomach; take CABOMETYX at least 1 hour before or at least 2 hours after eating

## DO NOT



- Take CABOMETYX with food
- Crush, chew, or split the tablet



- **Drink grapefruit juice, eat grapefruit, or take supplements that contain grapefruit or St. John's wort** during treatment with CABOMETYX

Tell your healthcare team about all the medicines you take, including prescription or over-the-counter medicines, vitamins, and herbal supplements.

**Call your doctor or nurse right away** if you take too much CABOMETYX

Please see Important Safety Information on pages 16-19 and [tap here](#) for the Patient Information in the full Prescribing Information.

## What if you forget to take your CABOMETYX?

If your next dose is in:

### Less than 12 hours

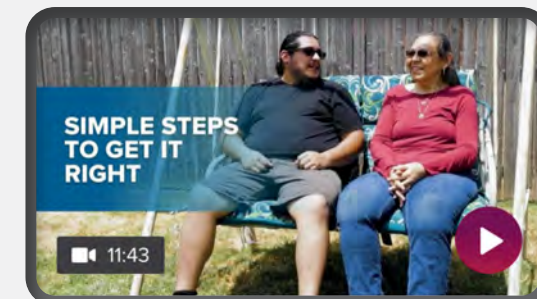
- Do not make up the missed dose
- Take the next dose when you usually take it

### 12 hours or more

- Talk to your doctor or nurse if you miss a dose

This is not intended as medical advice. Talk to your doctor if you have questions.

**Watch actual patients share their experiences, including tips on how to remember to take CABOMETYX**



 **TAP HERE**

# Indication and Important Safety Information

## What is CABOMETYX?

CABOMETYX is a prescription medicine used to treat:

- Adults and children 12 years of age and older who have a type of cancer called pancreatic neuroendocrine tumors (pNET) or extra-pancreatic neuroendocrine tumors (epNET) that has been previously treated, cannot be treated by surgery, and has spread (locally advanced or metastatic).

It is not known if CABOMETYX is safe and effective in children younger than 12 years of age.

## What are the possible side effects of CABOMETYX?

### CABOMETYX may cause serious side effects, including:

**Bleeding (hemorrhage).** CABOMETYX can cause severe bleeding that may lead to death. Tell your healthcare provider right away if you get any signs of bleeding during treatment with CABOMETYX, including:

- coughing up blood or blood clots
- vomiting blood or if your vomit looks like coffee grounds
- red or black (looks like tar) stools
- menstrual bleeding that is heavier than normal
- any unusual or heavy bleeding

**A tear in your stomach or intestinal wall (perforation) or an abnormal connection between 2 parts of your body (fistula).** Tell your healthcare provider right away if you get tenderness or pain in your stomach area (abdomen) that is severe or that does not go away.

**Blood clots, stroke, heart attack, and chest pain.** Get emergency help right away for:

- swelling or pain in your arms or legs
- shortness of breath
- feel lightheaded or faint
- sweating more than usual
- numbness or weakness of your face, arm, or leg, especially on one side of your body
- sudden confusion, trouble speaking or understanding
- sudden trouble seeing in one or both eyes
- sudden trouble walking
- dizziness, loss of balance or coordination
- a sudden severe headache

**High blood pressure (hypertension).** Hypertension is common with CABOMETYX and sometimes can be severe. Your healthcare provider will check your blood pressure before starting CABOMETYX and regularly during treatment with CABOMETYX. If needed, your healthcare provider may prescribe medicine to treat your high blood pressure. Tell your healthcare provider if you develop severe headaches, nose bleeds, tiredness or confusion, vision changes, chest pain, trouble breathing, irregular heartbeat, or blood in your urine.

**Heart problems.** CABOMETYX can cause heart failure that may lead to death. Your healthcare provider may check your heart function before and during treatment with CABOMETYX. Tell your healthcare provider right away if you get any of the following signs and symptoms: feeling like your heart is pounding, racing, or beating irregularly; shortness of breath; swelling of your ankles or feet; feeling lightheaded; feeling tired.

**Diarrhea.** Diarrhea is common with CABOMETYX and can be severe. If needed, your healthcare provider may prescribe medicine to treat your diarrhea. Tell your healthcare provider right away if you have frequent loose, watery bowel movements.

**A skin problem called hand-foot skin reaction.** Hand-foot skin reactions are common with CABOMETYX and can be severe. Tell your healthcare provider right away if you have rashes, redness, pain, swelling, or blisters on the palms of your hands or soles of your feet.

**Protein in your urine and possible kidney problems.** Symptoms may include swelling in your hands, arms, legs, or feet. Your healthcare provider will check you for this problem during treatment with CABOMETYX.

**Severe jaw bone problems (osteonecrosis).** Your healthcare provider should examine your mouth before you start and during treatment with CABOMETYX. Tell your dentist that you are taking CABOMETYX. It is important for you to practice good mouth care during treatment with CABOMETYX. Tell your healthcare provider right away if you develop any symptoms of jaw problems, including: jaw pain, toothache, or sores on your gums.

Please see Important Safety Information on pages 16-19 and [tap here](#) for the Patient Information in the full Prescribing Information.

## Important Safety Information

(Cont'd)

**Wound healing problems.** Wound healing problems have happened in people who take CABOMETYX. Tell your healthcare provider if you plan to have any surgery before or during treatment with CABOMETYX.

- You should stop taking CABOMETYX at least 3 weeks before planned surgery.
- Your healthcare provider should tell you when you may start taking CABOMETYX again after surgery.

**Reversible posterior leukoencephalopathy syndrome (RPLS).** A condition called reversible posterior leukoencephalopathy syndrome can happen during treatment with CABOMETYX. Tell your healthcare provider right away if you have headaches, seizures, confusion, changes in vision, or problems thinking.

**Change in thyroid function.** CABOMETYX can cause changes in your thyroid function, including changes to thyroid hormone levels in your blood. Your healthcare provider will do blood tests to check your thyroid function before and during treatment with CABOMETYX.

**Decreased calcium level in your blood (hypocalcemia).** CABOMETYX can cause you to have a decreased amount of calcium in your blood. Your healthcare provider will do blood tests to check you for this problem and give you calcium if needed. **Tell your healthcare provider right away if you get any of the following signs or symptoms:**

- muscle stiffness or muscle spasms
- sudden weight gain
- numbness or tingling in your fingers, toes, or around your mouth
- swelling of your arms, hands, legs, and ankles
- seizures

Your healthcare provider may change your dose, temporarily stop, or permanently stop treatment with CABOMETYX if you have certain side effects.

**The most common side effects of CABOMETYX include:**

- tiredness
- decreased appetite
- nausea and vomiting
- weight loss
- constipation

CABOMETYX may cause fertility problems in females and males, which may affect your ability to have children. Talk to your healthcare provider if you have concerns about fertility.

Please see Important Safety Information on pages 16-19 and [tap here](#) for the Patient Information in the full Prescribing Information.

These are not all of the possible side effects of CABOMETYX. Call your doctor for medical advice about side effects. You may report side effects to FDA at 1-800-FDA-1088 or [www.fda.gov/medwatch](http://www.fda.gov/medwatch).

**Before you take CABOMETYX,** tell your healthcare provider about all of your medical conditions, including if you:

- have had a liver problem other than liver cancer.
- have a recent history of bleeding, including coughing up or vomiting blood, or black tarry stools.
- have an open or healing wound.
- have high blood pressure.
- have a low calcium level in your blood (hypocalcemia).
- plan to have any surgery, dental procedure, or have had a recent surgery. You should stop treatment with CABOMETYX at least 3 weeks before planned surgery.
- are pregnant, or plan to become pregnant. CABOMETYX can harm your unborn baby.
  - If you are able to become pregnant, your healthcare provider will check your pregnancy status before you start treatment with CABOMETYX.
  - Females who are able to become pregnant should use effective birth control (contraception) during treatment and for 4 months after your last dose of CABOMETYX.
  - Talk to your healthcare provider about birth control methods that may be right for you.
  - If you become pregnant or think you are pregnant, tell your healthcare provider right away.
- are breastfeeding or plan to breastfeed. It is not known if CABOMETYX passes into your breast milk. Do not breastfeed during treatment and for 4 months after your last dose of CABOMETYX.

**Tell your healthcare provider about all the medicines you take,** including prescription or over-the-counter medicines, vitamins, and herbal supplements. CABOMETYX and certain other medicines may affect each other, causing side effects.

**What should I avoid while taking CABOMETYX?**

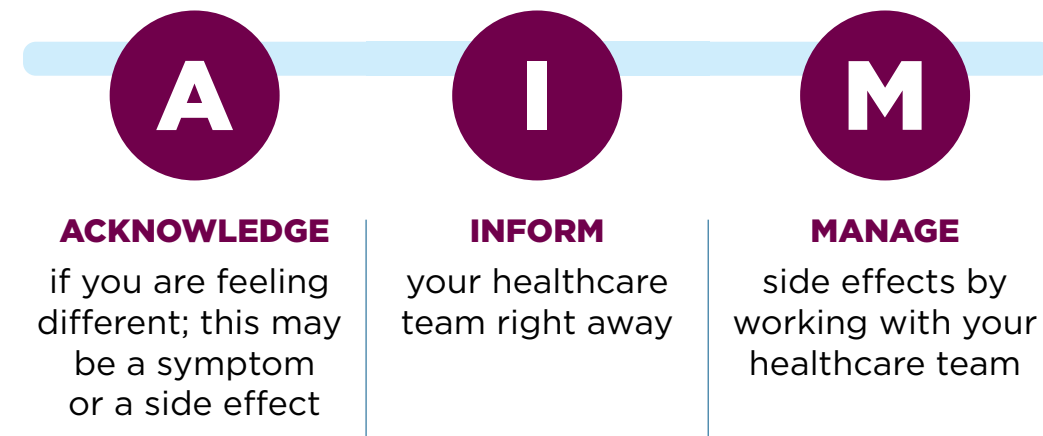
**Avoid** drinking grapefruit juice, eating grapefruit, or taking supplements that contain grapefruit or St. John's wort during treatment with CABOMETYX.



## Working with your healthcare team to help manage certain side effects

CABOMETYX can cause certain side effects. The sooner you share information, the sooner your healthcare team can help you manage certain side effects.

We have an approach called AIM to help you share your side effects with your healthcare team



Side effects can happen at any time, including in the first weeks or months after starting treatment with CABOMETYX.

### SELECT IMPORTANT SAFETY INFORMATION

**Wound healing problems.** Wound healing problems have happened in people who take CABOMETYX. Tell your healthcare provider if you plan to have any surgery before or during treatment with CABOMETYX.

- You should stop taking CABOMETYX at least 3 weeks before planned surgery.
- Your healthcare provider should tell you when you may start taking CABOMETYX again after surgery.

Please see Important Safety Information on pages 16-19 and [tap here](#) for the Patient Information in the full Prescribing Information.

Your healthcare team members know you and are experts on managing your condition — but they can't do it without **you**.



**Contact your team immediately** with any questions or concerns.



**Take an active role** by knowing who you should contact and how you should contact them to get your questions or concerns addressed.

The sooner they know about your concerns, the sooner they can help



Every person with NETs has different needs, and healthcare teams may differ based on those needs.

As your needs change over time, who is a part of your team may also change.

Ask whose expertise can help you and then actively work with them to address any issues or find additional support that may be available to you.

# Financial support information and resources



To learn more about how EASE can help you, contact us at:

**1-844-900-EASE**  
**(1-844-900-3273)**

Exelixis Access Services (EASE) is your resource for questions and needs related to insurance coverage, financial assistance, and treatment support for CABOMETYX® (cabozantinib).

## Helping You Start and Stay on CABOMETYX

Your EASE Case Manager is available by phone to help you:

- Understand if your health insurance covers CABOMETYX tablets and what your out-of-pocket costs for CABOMETYX may be
- Learn about your financial support options



**TAP** to sign up or get more  
**HERE** information about EASE

## If you are commercially insured...



### EASE Co-pay Program

Eligible, commercially insured patients may pay as little as \$0 per month. Annual and transaction limits apply. The EASE Co-Pay Program is not available to patients receiving prescription reimbursement under any federal, state, or government-funded insurance programs or where prohibited by law. Additional Terms and Conditions apply.

## If you are uninsured or cannot afford your medicine...



### EASE Patient Assistance Program

May provide you with CABOMETYX free of charge if you qualify. Additional restrictions and eligibility rules apply.

This description of the Exelixis® Access Services program is for informational purposes only. Exelixis makes no representation or guarantee concerning reimbursement or coverage for any service or item. Information provided through the Exelixis Access Services program does not constitute medical or legal advice and is not intended to be a substitute for a consultation with a licensed healthcare provider, legal counsel, or applicable third-party payer(s). Exelixis reserves the right to modify the program at any time without notice.

## Access. Assistance. Along the journey.



**CALL: 1-844-900-EASE**  
**(1-844-900-3273)**



**Monday to Friday**  
**8:00 AM to 8:00 PM (ET)**

## Get support for your treatment journey

The BE CONNECTED support program is designed to offer educational information for you or someone you are caring for who is taking CABOMETYX. You can learn more about what you may expect while on treatment with CABOMETYX.

- Recognizing side effects and working with your healthcare team to help manage them
- Where to find useful resources
- Lifestyle tips offering wellness support
- Information about organizations that may offer support

**For questions about treatment, please speak with your healthcare team.**

Please see Important Safety Information on pages 16-19 and [tap here](#) for the Patient Information in the full Prescribing Information.

